



On-Site Lining

Certikin
FLUIDRA

Certikin Infinite On-Site Lining

Certikin's Infinite On-Site Lining service continues to go from strength to strength in terms of level of service and installation ability and the depth of quality in the materials we use.

Now firmly established in this market, Certikin's ability to install a liner into almost any pool and any environment speaks for itself, with a wide variety of installations successfully completed – from basic balance tanks, standard and complex domestic pools, through to full commercial size installations.

Our material range continues to increase and is of the highest quality. Our supply partners are some of the finest PVC manufacturers in the world and continue to excel themselves in terms of development and quality standards. All materials sourced are certified for use in domestic and commercial applications – being KSW and CE certified they meet all current European requirements for swimming pool installation. All of our anti-slip membranes, plain colour or printed, are manufactured to DIN EN 51097 Cat C standards.

Features:

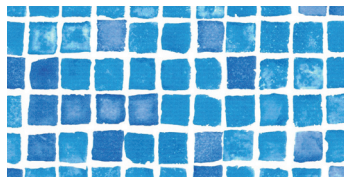
- Installed by Certikin
- Fully certified materials – suitable for any installation
- High quality printing with a multiple lacquered protective surface – offering the highest stain, discolouration and abrasion resistance
- UV Stabilised – acceleration chamber tested
- Ideal for both new and re-furbished pools, including concrete, cement render, steel, aluminium, timber and fibreglass – note: fittings must be liner fittings
- Anti-slip options are available for steps and walk in slopes
- Anti-microbially equipped
- Tear resistant
- Sealed with colour co-ordinated or translucent liquid PVC
- Geo-textile underlay available and recommended
- Suitable for domestic and commercial applications



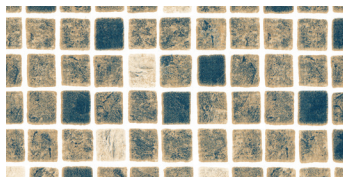
Do It Yourself? If you have the skills to install yourself, contact The Liners and Covers Division for pricing of vinyl and accessories.

Pattern options for Infinite On-Site Lining

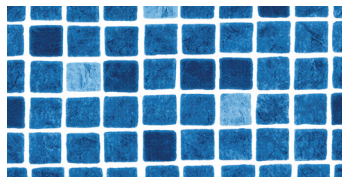
Consideration should be given to which pattern is chosen. Regular repeat patterns such as mosaics create a high impact look, but are not always suitable for curved or awkward shaped pools where the run of tiles can conflict. Random patterns such as marbles and broken mosaics create an all over moving water effect when filled.



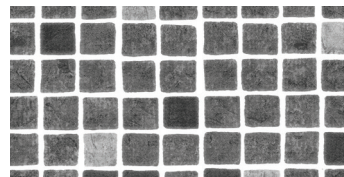
Mosaic



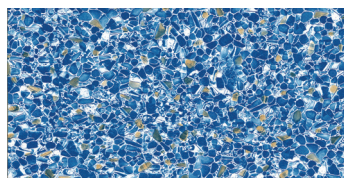
Persia/Cyrus Sand



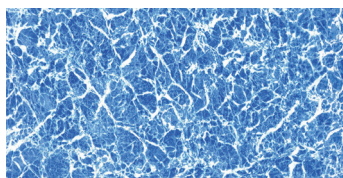
Persia/Cyrus Blue (Anti-Slip available)



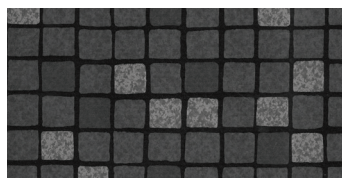
Persia/Cyrus Black



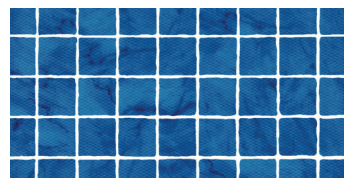
Oceanstone (Anti-Slip available)



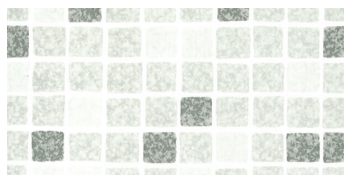
Blue Marble (Anti-Slip available)



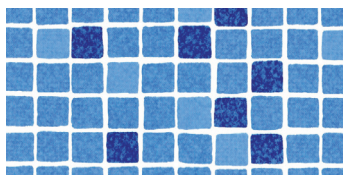
Silver Black Tile



Azur Mosaic (special order)



Grey Tile



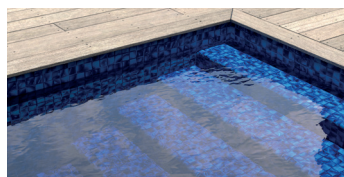
Blue Tile



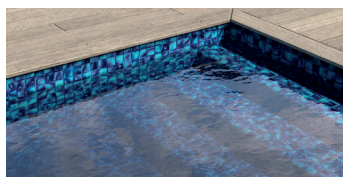
Platinum (special order)



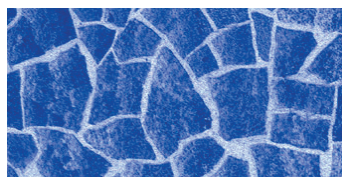
Silver Lagoon (special order)



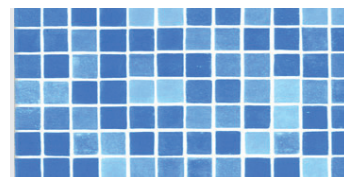
Electric Blue (special order)
(Anti-Slip available)



Jamaican Green (special order)
(Anti-Slip available)



Carrara (special order)
(Anti-Slip available)



Crystal Mosaic (special order)
(Anti-Slip available)



Disco Pearl (special order)

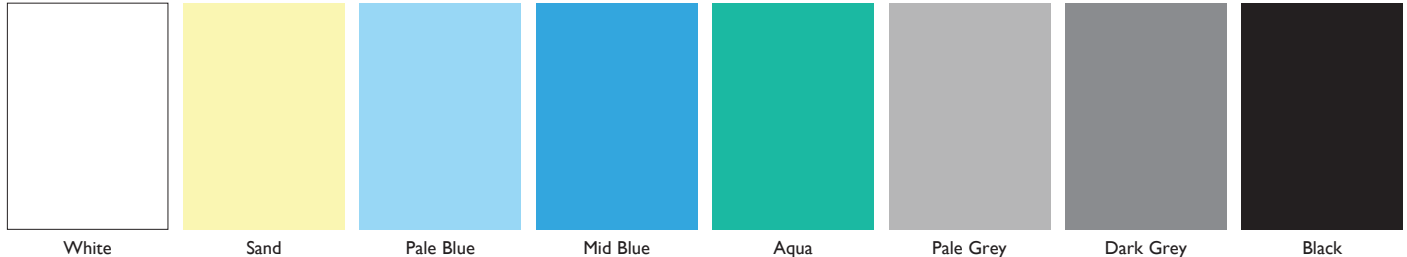


Butterfly (special order)
(Anti-Slip available)

Plain colour options for Infinite On-Site Lining

Plain, solid colours are ideal for creating an all over crisp finish. They can be combined with patterns around the perimeter, walls and floor if desired to create contrast and differentiation. Whilst solid colours are clean and even, they can highlight unevenness in the pool shell in some instances.

Our extensive range of colours offers the widest choice and the highest quality. All plain colours are available in matching anti-slip variants – these can be used to complement the all over colour of your liner, or mixed with patterns and other colours to create areas of contrast on step treads, slopes, ledges and other safety areas.



Ceramics By Renolit Alkorplan (Special Order)

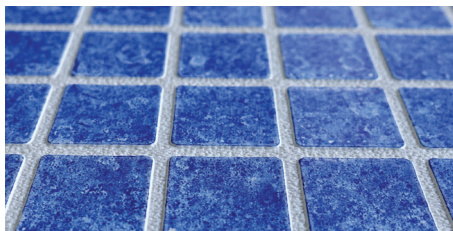
Renolit Alkorplan Ceramics is a range of reinforced membrane, with the appearance of ceramic mosaic inspired by Greek mythology. Thicker than a traditional membrane in order to achieve the relief, Ceramics is one of most resistant, impermeable and lasting liners on the market.

Features:

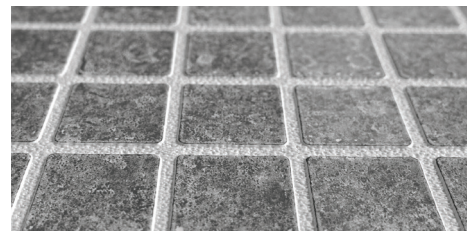
- Unique designs to give the look and feel of ceramic mosaic tiles
- All the usual benefits of standard on site lining vinyl
- Textures of each design comply with Cat C of the required DIN standard for anti-slip, meaning the vinyl can be used on all surfaces



Selene



Atenea

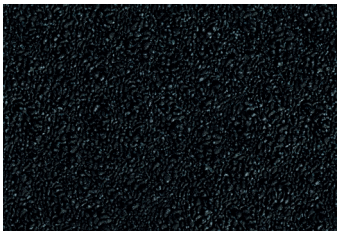


Etna

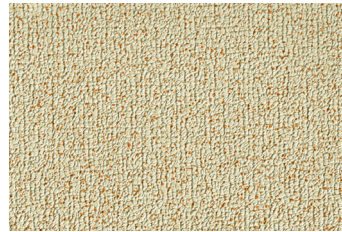
Exclusive Range - Island Dreams

Features:

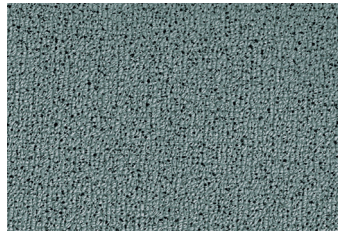
- Unique designs and textures replicating some of the finest beaches in the world
- All the usual benefits of standard on-site lining vinyl
- Textures of each design allow the vinyl to comply with Cat C of the required DIN standard for anti-slip meaning the vinyl can be used safely on all surfaces
- Specific co-ordinated liquid PVC seam sealer
- Exclusive to Certikin in the UK



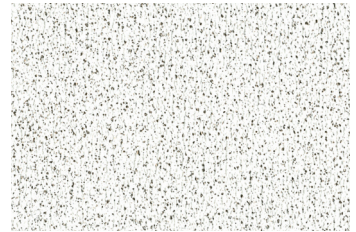
ISLAND Maui



ISLAND Aruba



ISLAND Santorini



ISLAND Fiji

Touch Range (Special Order)

The Touch range of vinyl has been designed to simulate a variety of natural stone effects, both in appearance and texture. At 2mm, this high-quality vinyl is thicker than standard vinyl available on the market and is manufactured using the latest technology which incorporates printing, embossing and engraving.

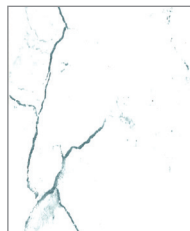
The texture of the Authentic and the new Vanity designs allow them to be certified as an anti-slip product to Cat C of the required DIN standard, and the Elegance design has its own complementary anti-slip option which also meets the standard. All Touch vinyls are ultimately protected by the Alkorplan 3000 multi-layer lacquering system for maximum protection within the pool environment.



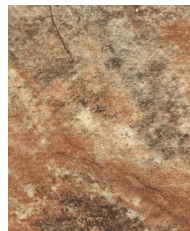
Elegance



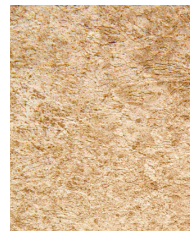
Relax



Vanity



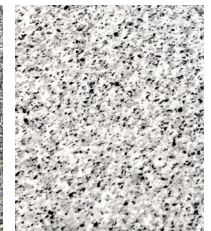
Authentic



Sublime



Prestige



Origin

Royal Range (Special Order)

Luxurious marble optic | 3D-Surface

Royal swimming pool membranes unite luxurious optic with excellent product properties. With their gorgeous design and classy 3D marble surface they come out to be a visual highlight for every pool.

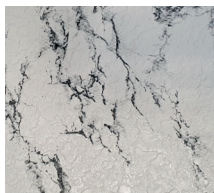
Thickness 2,0 mm, Width 1,65 m, Width 20 m



Royal Elisabeth



Royal Louis



Royal Victoria

Vogue by Renolit

Cat C DIN Standard

If you are looking for comfort and design in your home, why don't you do it in your pool as well? Available in 3 luxurious textures, this 2 mm reinforced laminate is printed and inspired by interior design and trends, with the same properties as the TOUCH range.

Thickness 2,0 mm, Width 1,65 m, Length 20 m



Vogue Tropical



Vogue Summer



Vogue Urban



Vogue Vintage

Aquasense

The refined and durable Aquasense embossed collection recreates a level of natural beauty and elegance that captures all of your senses.

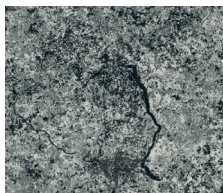
Thickness 1,6mm, Width 1,65m Roll Length 20m



Fidji



Granit Blue



Granit Grey



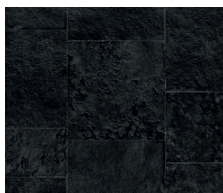
Granit Sand



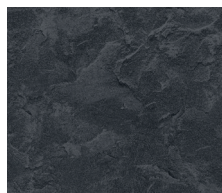
Golden Riviera



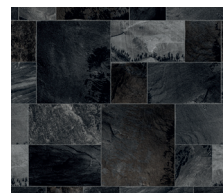
White Riviera



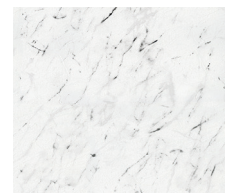
Nordic Stone



Black Slate



Brown Basalt



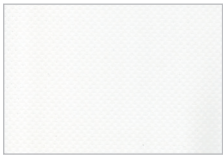
Calacatta Marble

Elbtal Elite (Special Order) - Anti-Slip Available

Elbtal's elite materials come in 6 natural colours which contain a unique formula that not only protects from chlorine but also from UV radiation, one of the main reasons for deterioration of the pool surface.

The durable elite membrane strongly resists chemical substances such as sun creams and chlorine in both commercial and residential pools. Only pure virgin material is used in the manufacturing process and no heavy metals. This creates the best quality product whilst conserving natural resources and the environment.

Elite is algae resistant, anti-microbial material which maintains its original colour, meaning any pool will look fresh and inviting to swimmers for longer.



Arctic White



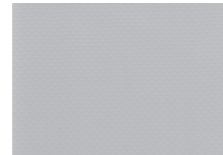
Black Stone



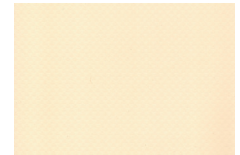
Blue Sky



Deep Sea



Grey Rock



Sand Beach





www.certikin.co.uk



Contact your Certikin stockist for prices and availability.

This literature is intended as a guide.
The company reserves the right to change the specifications without notice.